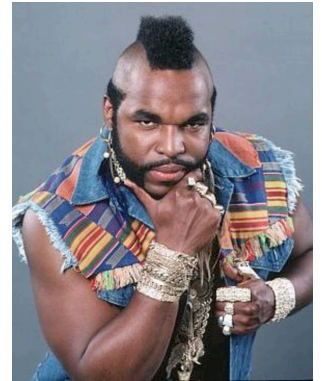




Characters of a Generation

Create a character (cartoon or realistic) that best typifies your chosen era / decade within Australian Culture. Fill out the research sheet and conduct your own research based on those items in order to generate your own character.

As part of your research, find any three existing “characters” created in your chosen decade. In note form, respond to the following points:



Who? – *Who* was the character?

What? – *What* was the point of this character?

When? – *When* was the character invented?

Where? – *Where* would you find this character?

Why? – *Why* was this character important in defining a generational issue?

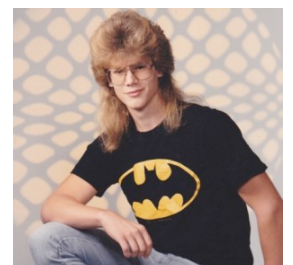
How? – *How* can you use this character to generate your own?

Create a poster presentation of your character on A3 cardboard. One half needs to have your character on A4 paper, while the second half will include the name of the character as well as a review from the questions over the page.



Assessment Criteria

- Appropriate research
- Images and Background information (from sheet)
- Appropriate character and description
- Overall poster presentation



Characters of a Generation

Presentation Information



Name _____

Decade / Era _____

Who? – *Who is the character?*

What? – *What is the point of this character?*

When? – *When is your character most influential in the chosen decade?*

Where? – *Where would you find this character in your chosen era?*

Why? – *Why is this character important in defining a generational issue?*

How? – *How is this character able to typify an issue of that era?*
